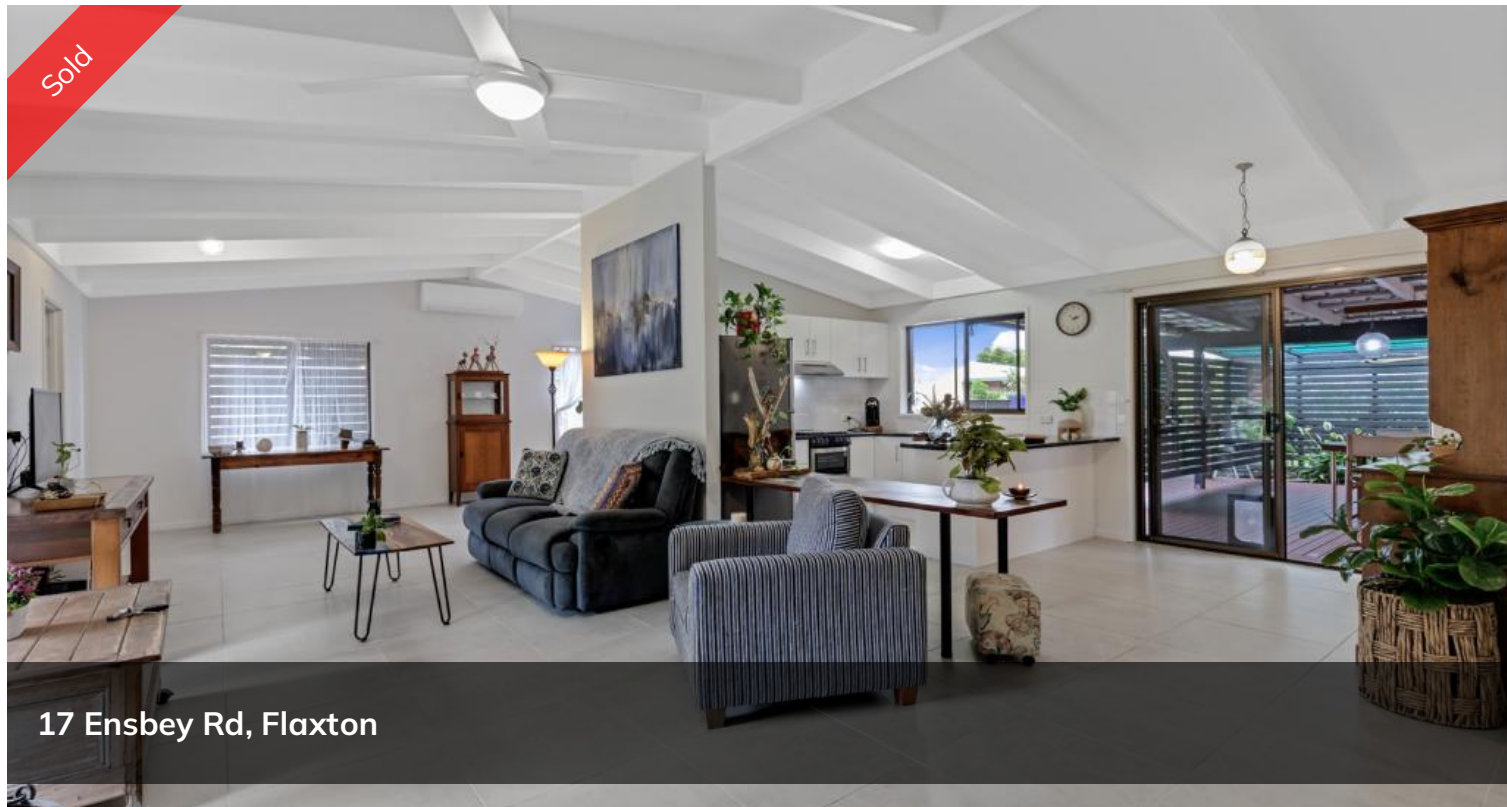


Sold



17 Ensbey Rd, Flaxton



A PRIVATE SANCTUARY - PEACEFUL - CONVENIENT.

Welcome to 17 Ensbey Road Montville, such a kind and caring community in the heart of the Sunshine Coast Hinterland.

This charming low set Brick and Colourbond home is perfectly positioned in one of Flaxton's most sought after locations just minutes to public transport and the vibrant villages of Montville and Mapleton with its shop's cafes and local schools.

The peaceful enclave offers a convenient, quiet, and safe community environment. A home that will delight you with its character, warmth, open plan living, raked ceilings, cosy fireplace and covered alfresco entertaining deck. Ideal for social gathering or just relaxing.

Set amongst private, established gardens and mature trees on a generous 840m² block, a home that is designed for ease of maintenance and easy-care living, plus offers a peaceful private lifestyle in the beautiful Sunshine Coast Hinterland away from the

🏠 3 🛏️ 1 🚿 2 📏 840 m²

Price	SOLD
Property Type	Residential
Property ID	448
Land Area	840 m ²

Agent Details

Margaret Deighton - 0411 399 514

Office Details

The Property League
07 5476 3579

AroRealty

hustle and bustle of City life.

FEATURES INCLUDE

- Sought after location in the heart of the Hinterland - caring and welcoming community.
- Quiet residential enclave. Generous flat 840m² block.
- Open plan air - conditioned free flowing living / dining / kitchen area with raked ceilings and fireplace for the cool winter nights.
- Large covered alfresco entertaining deck. Ideal for social gatherings or just relaxing.
- 3 spacious bedrooms 2 with built - ins adjacent to main bathroom.
- The practical kitchen at the heart of the home has ample storage and bench space plus gas cooking and pantry.
- Separate office nook.
- Art and Hobby room.
- 35,000 L Concrete tanks plus 12,000 L water tank.
- Vegie garden - fruit trees: orange, mandarin, mulberry, and olive.
- Fenced with area for caravan, small boat or trailer.

If you are looking for a character home with charm in a quiet street close to all facilities like:

- Kondalilla National Park
- The Village of Montville and Mapleton just minutes away.
- 10 minutes to Nambour and Palmwoods with railway station.
- 30 minutes to Sunshine Coast Beaches, Maroochydore CBD and Airport.
- 60 minutes to Brisbane.

This property is a wonderful opportunity to secure a serene lifestyle in one of Flaxton's most desirable pockets.

PROPERTIES LIKE THIS DON'T LAST LONG. AN INSPECTION IS A MUST.

For a private inspection call Margie Deighton on 0411399514.

Disclaimer: Whilst every care is taken in the preparation of the information contained in this marketing, The Property League Sales will not be held liable for any errors in typing or information. All

interested parties should rely on their own enquiries to determine whether is in fact accurate, and that the property meets their requirements.

The above information provided has been furnished to us by the vendor/s. We have not verified whether or not that information is accurate and do not have any belief in one way or the other in its accuracy. We do not accept any responsibility to any person for its accuracy and do no more than pass it on. All interested parties should make and rely upon their own inquiries in order to determine whether or not this information is in fact accurate.