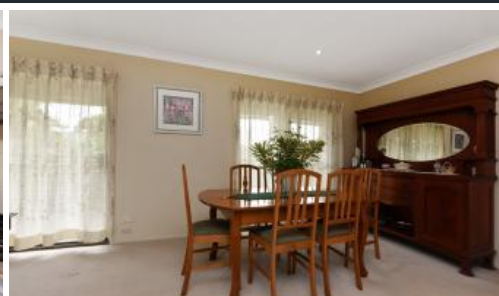


Sold



14 Argyle Cres, Coes Creek



Large family home ready for the next crowd.

Wanna know a secret?

You're just one click away from having your very own genie in a bottle!

This house, nestled against a spectacular hinterland backdrop with views beyond The Blackall Ranges, has the power to grant you all your property wishes.

14 Argyle Crescent is hidden way at the end of the cul-de-sac and desirably located in the suburb of Coes Creek with a warm sense of community and only moments to the shops and transport. This impressive 6 bedroom and 4 bathroom home on a large sized block certainly has all the elements for easy care living, relaxing or entertaining.

Immaculately maintained and manicured gardens can be enjoyed from one of many outdoor areas including the Parent's Retreat private courtyard, the inground salt water swimming pool or the wrap around balcony.

🛏 6 🚿 4 🚿 3 📏 1,356 m2

Price	SOLD
Property Type	Residential
Property ID	199
Land Area	1,356 m2

Agent Details

Amber Fox - 0405 357 735

Office Details

The Property League
07 5476 3579

AroRealty

Maybe you'd prefer cooking up a storm in the generous kitchen complete with 5* appliances.

If you're thinking, "what more could there possibly be?", well there's still a few things we forgot to mention:

- * BIR's in every bedroom
- * Internal workshop
- * External shed
- * Undercover parking for 3 cars
- * Ducted air conditioning
- * Established fruit trees
- * Rumpus room
- * Additional utility room (it's uses are limited only by your imagination).

Book your inspection today to avoid forever wondering "what if".

The above information provided has been furnished to us by the vendor/s. We have not verified whether or not that information is accurate and do not have any belief in one way or the other in its accuracy. We do not accept any responsibility to any person for its accuracy and do no more than pass it on. All interested parties should make and rely upon their own inquiries in order to determine whether or not this information is in fact accurate.